

SHED SHOOTERS

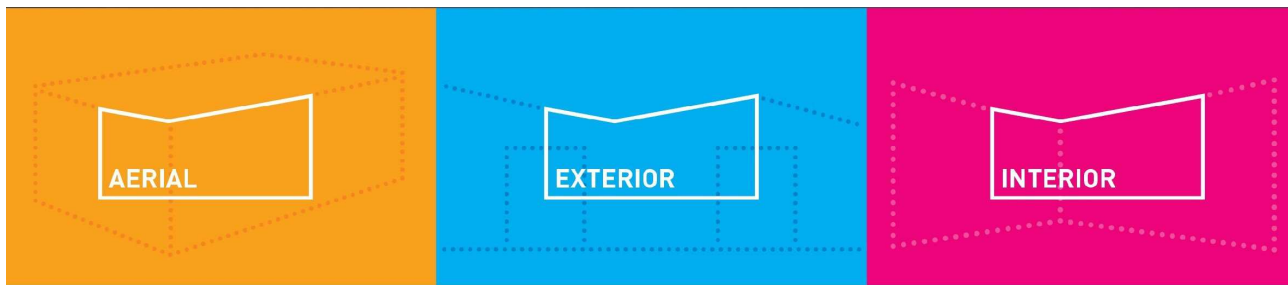
 WE'VE
GOT YOU
COVERED

AERIAL

EXTERIOR

INTERIOR

PHOTOGRAPHY | VIDEO | VIRTUAL TOURS

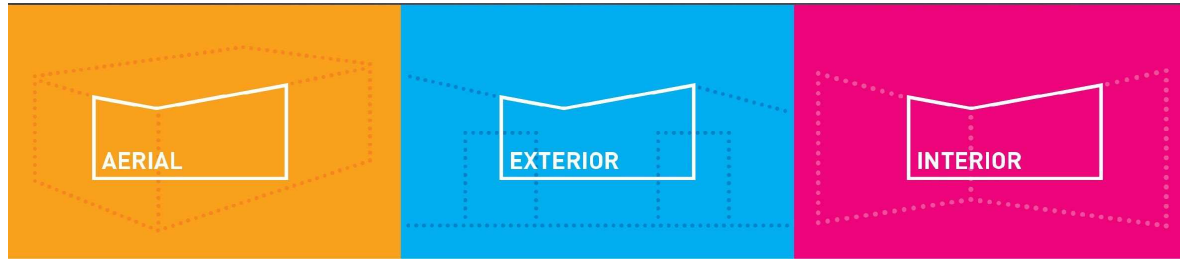


THE Commercial Property Photography Service

**The most comprehensive aerial and ground-based photography
and video packages are brought to you by the
UK's leading image-making professionals.**

Contact us now to get a quote for your projects

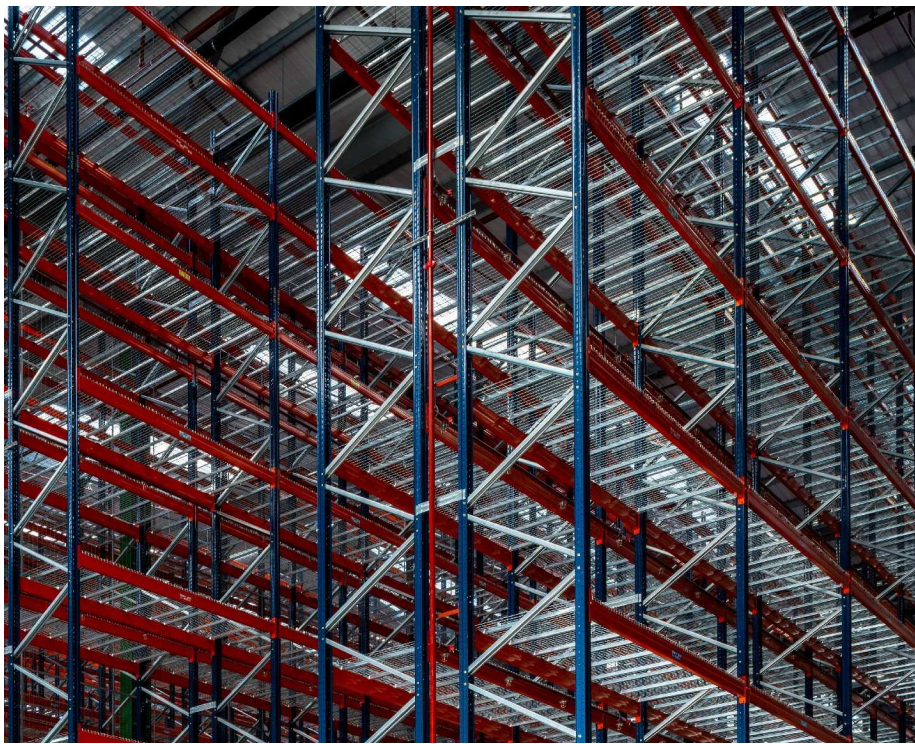
Call: 07801 078315 or e-mail: jake@shedshooters.com



The UK's leading commercial
photographers in aerial,
ground-based photography and video –
specialists dedicated to Commercial
Property professionals.

© ShedShooters 2023

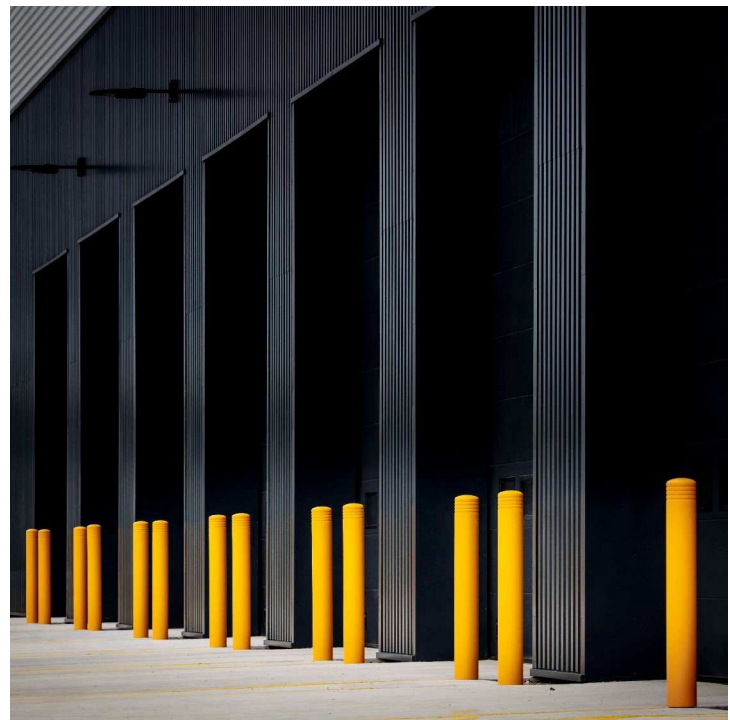




'cutting edge'

ShedShooters brings many years of professional imaging experience from leading specialists across the UK – meaning we can offer multi-agency packages and imaging solutions with high-end quality guaranteed.

We peer-review the quality of our offering to ensure that our clients get the best work. If you instruct ShedShooters you are guaranteed a professional service and top-notch product. Don't believe us? Take a look at our testimonials!

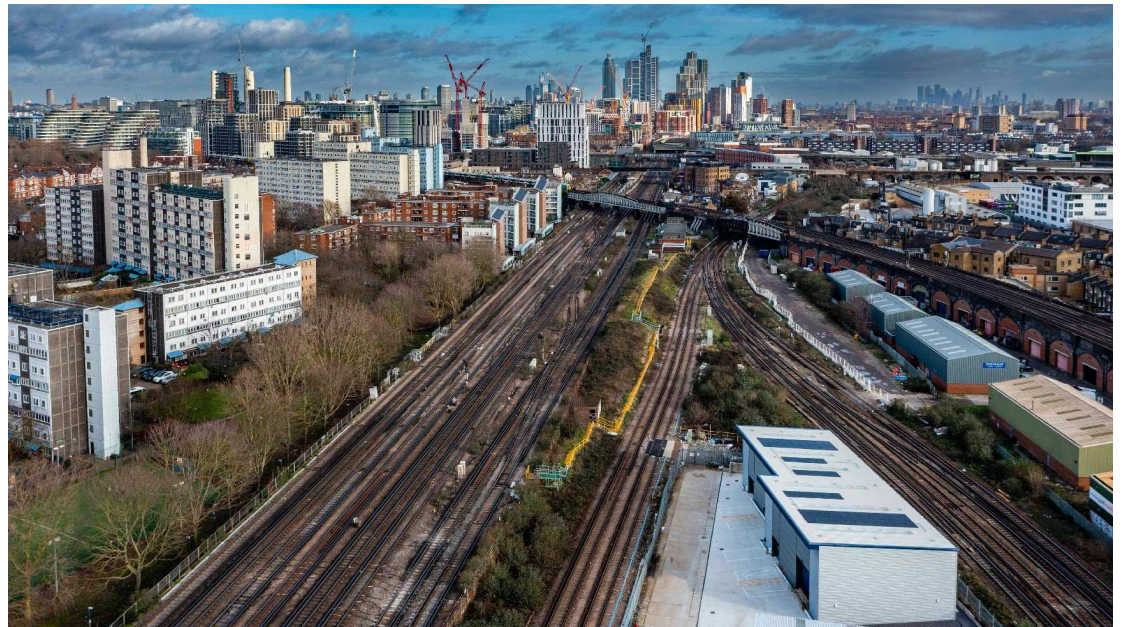




*'No matter the size....
...make your property
stand out'*

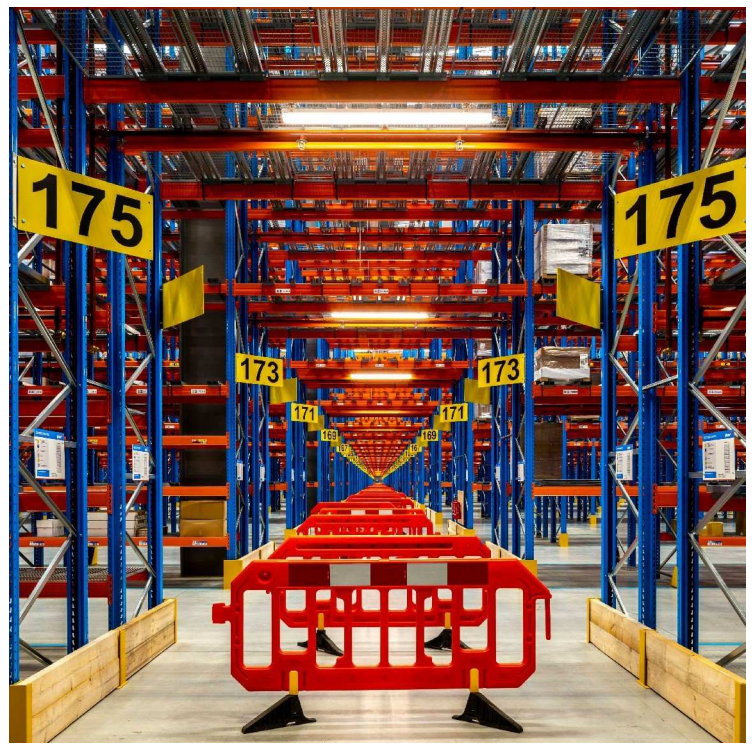
“We specialise in creating first-class content for clients who require attention-grabbing images and a compelling visual story for their brand or organisation.

The use of ‘Professional Photography’ showcases today’s property but, more importantly, it makes a statement about the core values of an organisation and tomorrow’s properties. ”



*Technical ability
plus
an unrelenting work ethic
equals*

quality



'we get the shots'

Exteriors





The care and attention that you have put into your project deserves professional photography to show it in its best light.

Whether ground or aerial, day or night we get the shots that make your project stand out.





We use filters, lenses and every trick in the book; but most of all we use

years of experience

to get results like this.





"....jaw dropping
Hero shots...."

Night Shoots





Sometimes the best results for your property can be achieved by a night-shoot.

Whether from the ground, or using a drone, we can capture amazing shots.

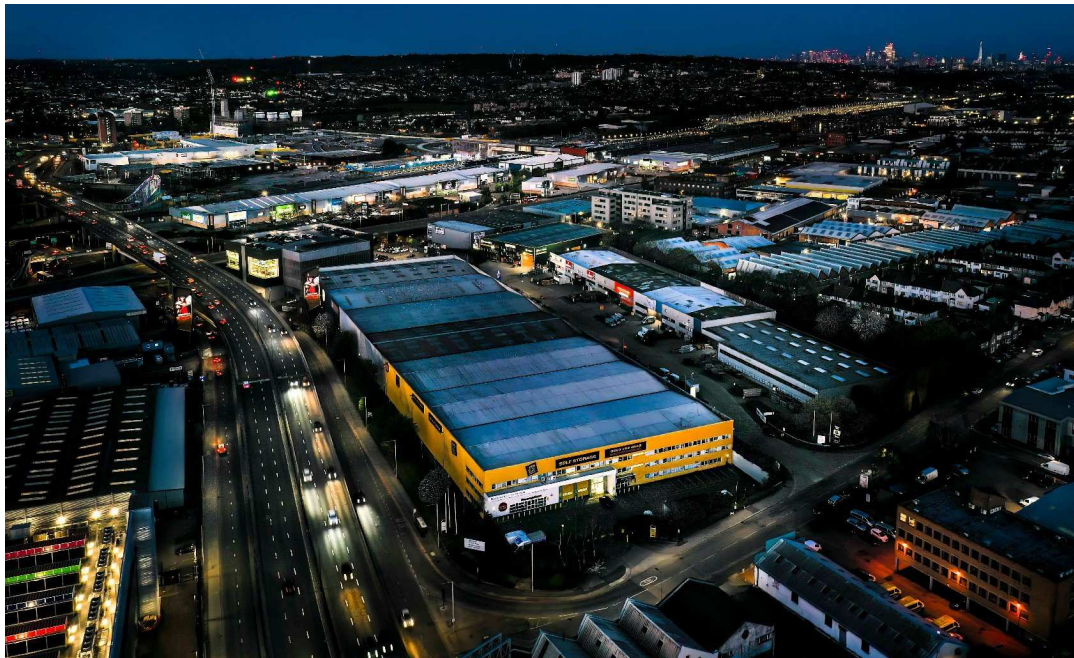
*The secret to a great
night shot is.....*

....lots of light!!



**SHED
SHOOTERS**

....ground or aerial....



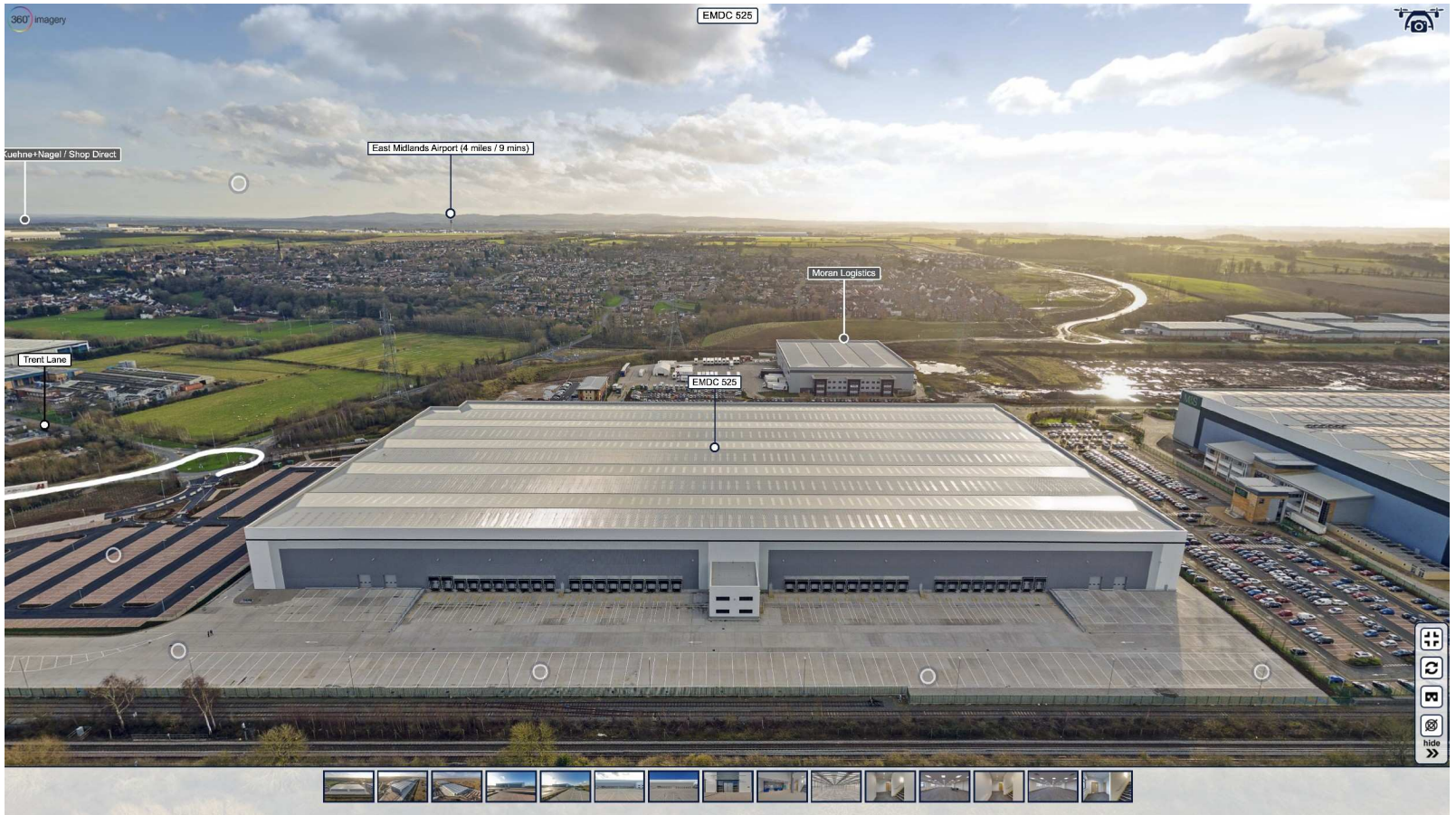




Goodman

Virtual Tours





Our Virtual Tours are regarded as **the Gold Standard** in the Commercial Property Marketing sector.

Aerial and ground based, fully annotated in your choice of colours. Mast shots for yards and warehouses and a full range of interior scenes will really sell your property.

Interiors





We don't just point and shoot;

It's important to capture as much information as possible in as few images as we can.

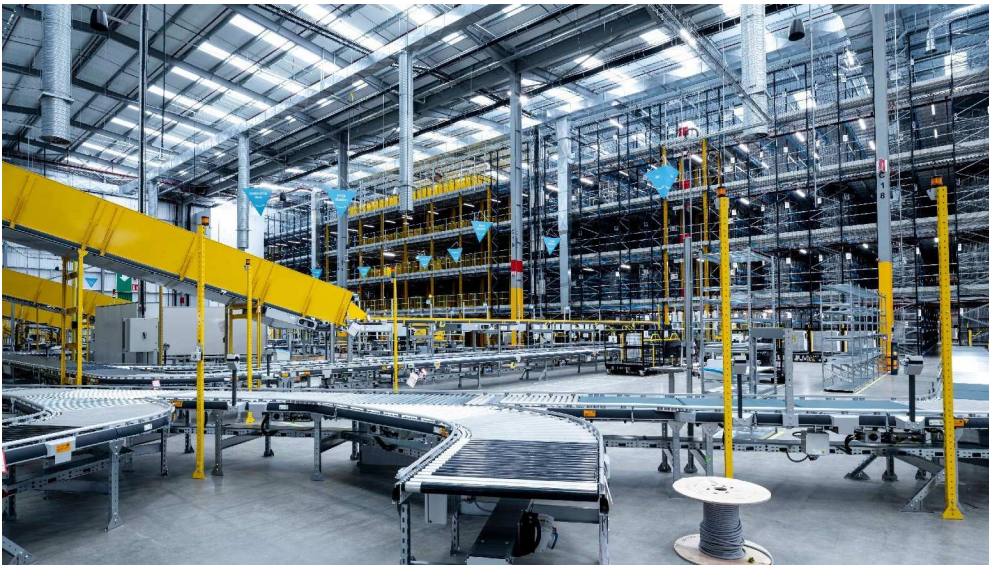
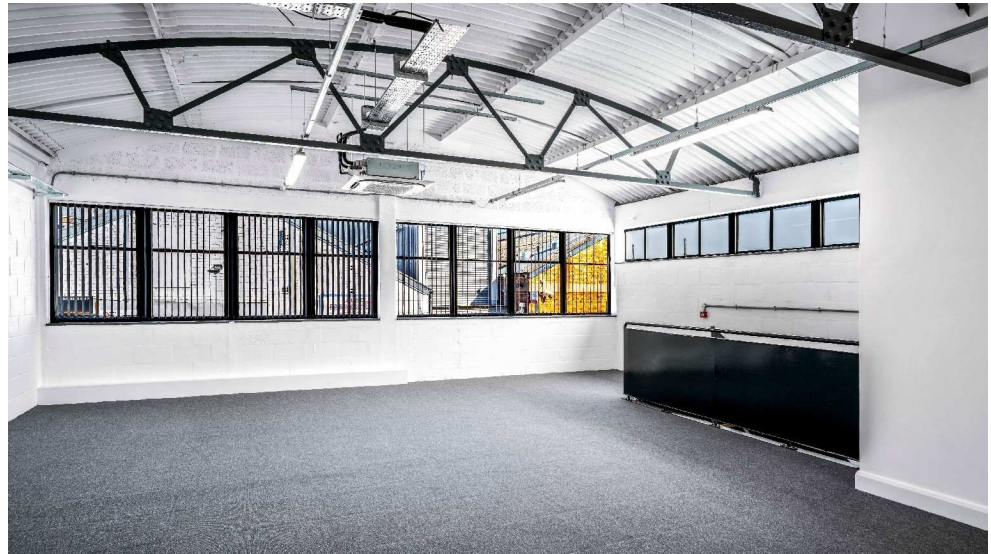
We think about:

- Size of the space
- Utility of the space
- Access
- Differentiating features
- Standard of finish
- True colour and brightness

This informs us about the camera positions, heights and directions.



SHED SHOOTERS



It's not all about the 'hero' shots.

We take care to make honest images that present exactly what's there, in the best possible light.

We have to work harder on these shots than any others!

'utility and function'



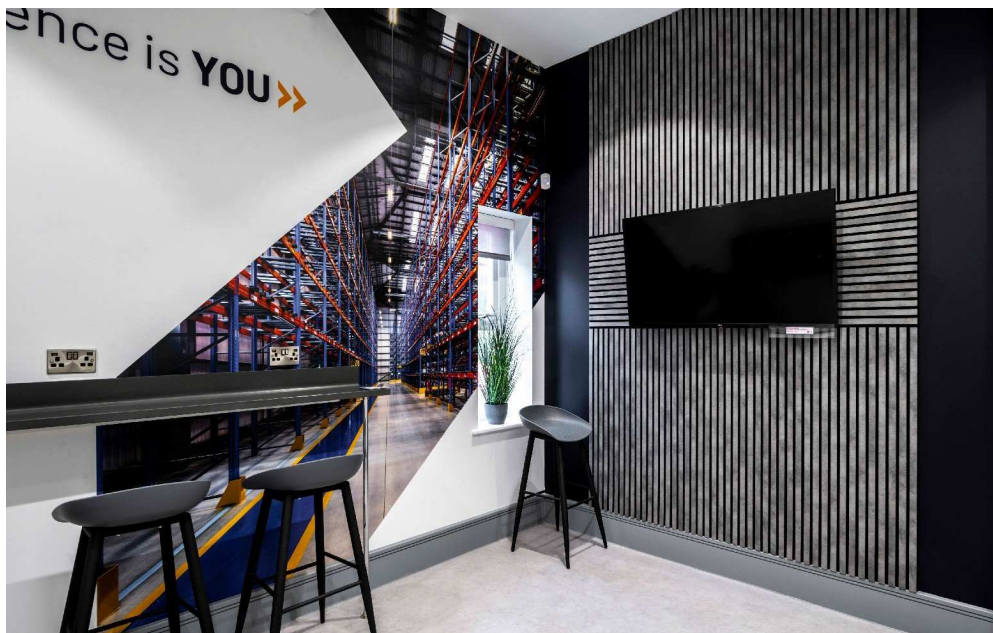
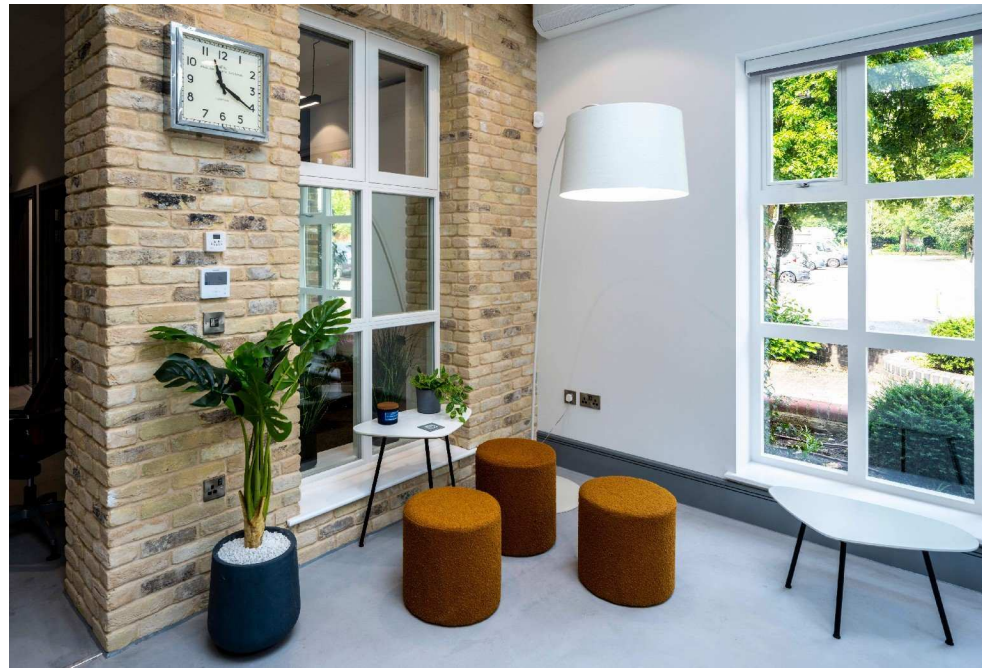


DESIGN >>>



*Showcase **your** skills.....*

'Retail is detail.....'





18m
CLEAR
INTERNAL
HEIGHT



PANATTONI



Post-Production





Before

After

The pressures on your own timetables sometimes dictate that we can't always photograph your property on a 'blue sky' day or when the yard is totally clear....

We take care to capture the images in a way that we can enhance them in 'post-production'.

We can 'turn the lights on'
if the sun didn't make an appearance for us!



Before

One of the greatest photographic challenges we face is the property aspects that *never* present in sunshine because of the property orientation.

We have some tricks up our sleeves that enable us to capture very useable shots even when we are faced with deep silhouettes!



After





Before

*'Bright' and 'Crisp'
are our watchwords*

After

For Interiors photography it is critically important to present a bright, clean look.

We remove the predominantly blue and yellow colour casts produced by the combination of natural and artificial lighting.

We don't do 'muddy' and 'murky'.....



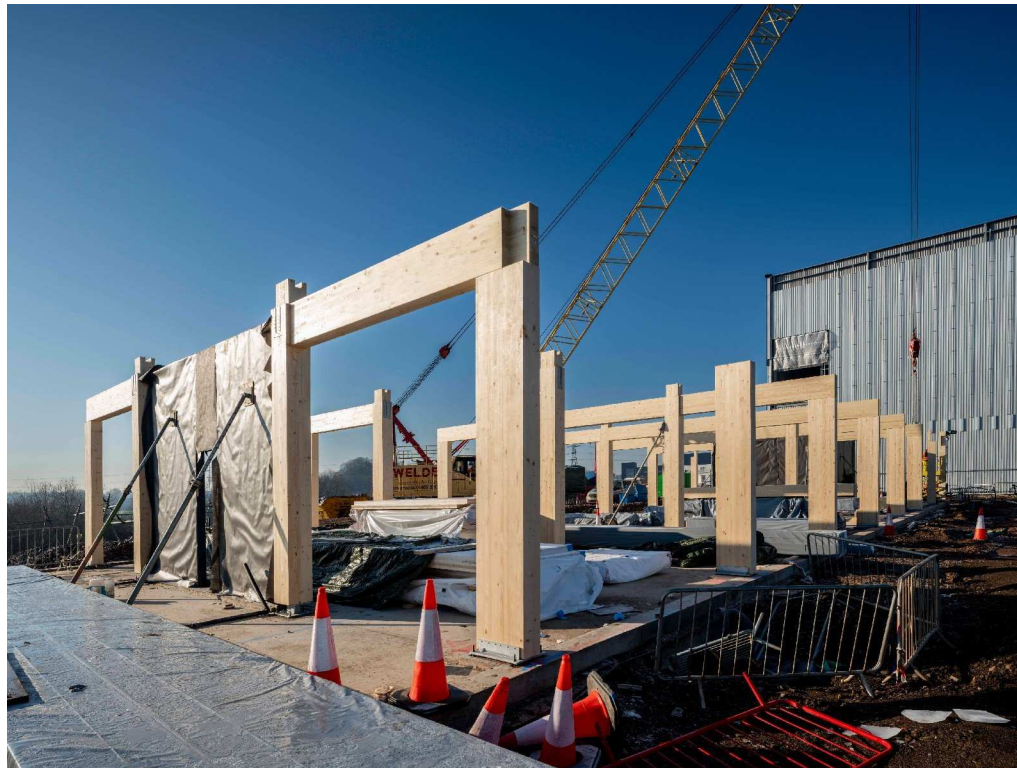
Construction Progress



'Progress Photography' can serve a number of masters. We make sure you get the shots you need.

It doesn't always have to be pretty – but we do our best anyway!

We can price these packages differently as they require less time on site and can often be slotted in around other work we are doing up and down the country.







**SHED
SHOOTERS**

PR Photography



SHED SHOOTERS

The rise of Social Responsibility and ever-present Social Media means clients need a variety of shots to differentiate their offering across a number of platforms and media types.

It's important to be able to capture good images of people as well as sheds!

We are happy to oblige with a variety of styles and documentary themes as required.



'good photography is the key to getting PR coverage'



Savills

262,077 followers
1w • 📍

+ Follow

We are pleased to present Mighty, an exciting new speculative industrial warehouse development totalling 104,106 sq.ft, split into two self-contained units.

Located adjacent to Allied Bakeries' Orpington national distribution centre, within the core of Orpington's retail warehousing, trade counter and distribution district, the two units offer cutting edge, energy saving technologies to reduce carbon emissions by 35%.

Learn more here: <http://savi.li/6042pVQmY>

Goya Developments LLP Hillwood Jack Booth



New 104,462 Sq Ft
Warehouse Development

Mighty

Orpington



TO LET

Cray Avenue, Orpington BR5 3RX
www.mightyorpington.co.uk





Prologis UK

4,219 followers

23h • 🌐



Don't miss this insightful piece from our Head of UK Project Management and [#Sustainability](#), [Simon Cox](#), as he discusses [#netzerocarbon](#) in [#logistics](#) buildings with [#BuildingBoardroom](#) from [Building Magazine](#).
<https://bit.ly/35Xc7Hu>



Building Magazine

30,571 followers

23h • 🌐

+ Follow

Last week, the Government unveiled its 10-point plan to start moving the UK towards a [#netzero](#) carbon economy. With this initiative being so high ...see more



👍 23



Like



Comment



Share



Send

From Social Media through to Annual Reports and headshots for your corporate website – we have got you covered!



THE YORKSHIRE POST

By Greg Wright

Monday, 21st December 2020, 1:30 pm

Updated Monday, 21st December 2020, 1:34 pm



Trebor Developments and Hillwood have completed the construction of a 411,470 sq ft speculative industrial unit in Doncaster

Trebor Developments and Hillwood have completed a 411,470 sq ft speculative industrial unit in Doncaster.

*It's not all about the kit.....
but we do use the best! Our
new Hasselblad X2D – with
its mind-blowing 100mp
sensor....*



*...and a series of
Tilt & Shift
architectural lenses....*



....which give us incredibly sharp, 'vertically correct' images and insane detail when zoomed-in to 100%





*Just a few of the clients we
have worked for recently....*



You don't have to take our word for it.....

.....here's what our repeat customers say about us

"I'm happy for you guys to write whatever you want – honestly, you've been brilliant."

Andy Stothard, Goya Developments

"We have used Shedshooters for a number of years, benefitting from their complete package of services and ability to combine high quality aerial photography, ground-based imagery and expertise in delivering virtual tours to create compelling marketing materials. Thorough and responsive, they always provide great results and a quick turnaround."

Emma Pickering, Marketing and Communications Manager, Goodman.

"I just wanted to write and thank you profusely for all the hard work that you have put into the last few weeks . Everything is now complete for all the the assets and I would have not been able to do it without you!! All the images are great and I can't believe how much you have done in a short space of time!"

SF, Mileway

"The new pricing is good and all makes sense. The combined package for the construction progress visits works well and makes it much easier to budget for."

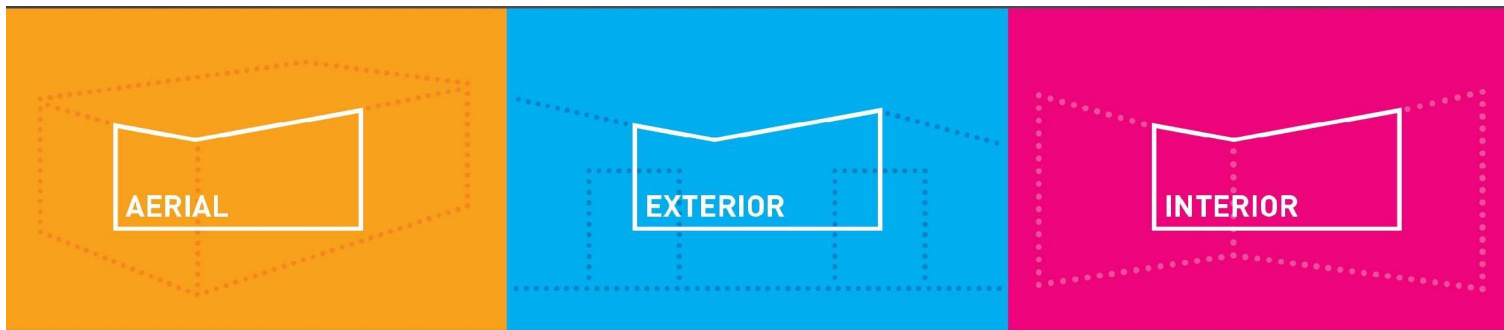
"We have been using ShedShooters for several years now and we are always delighted with the results they get for us. They are dependable and hard working and no matter what the brief they deliver great images promptly. "

"I received the images this morning and they're amazing!! I love them! "

"Pictures received. They're bloody brilliant! Thank you so much."

Contact us now to discuss your plans for 2023 and beyond.....





Why ShedShooters?

We have been very busy over the last few years.....shooting hundreds of properties and development schemes.

We go about our business totally professionally.
We are passionate about quality and we have more experience shooting commercial property than anyone else in the UK.

We strive to get the best images, using our experience, skill and the highest quality equipment.

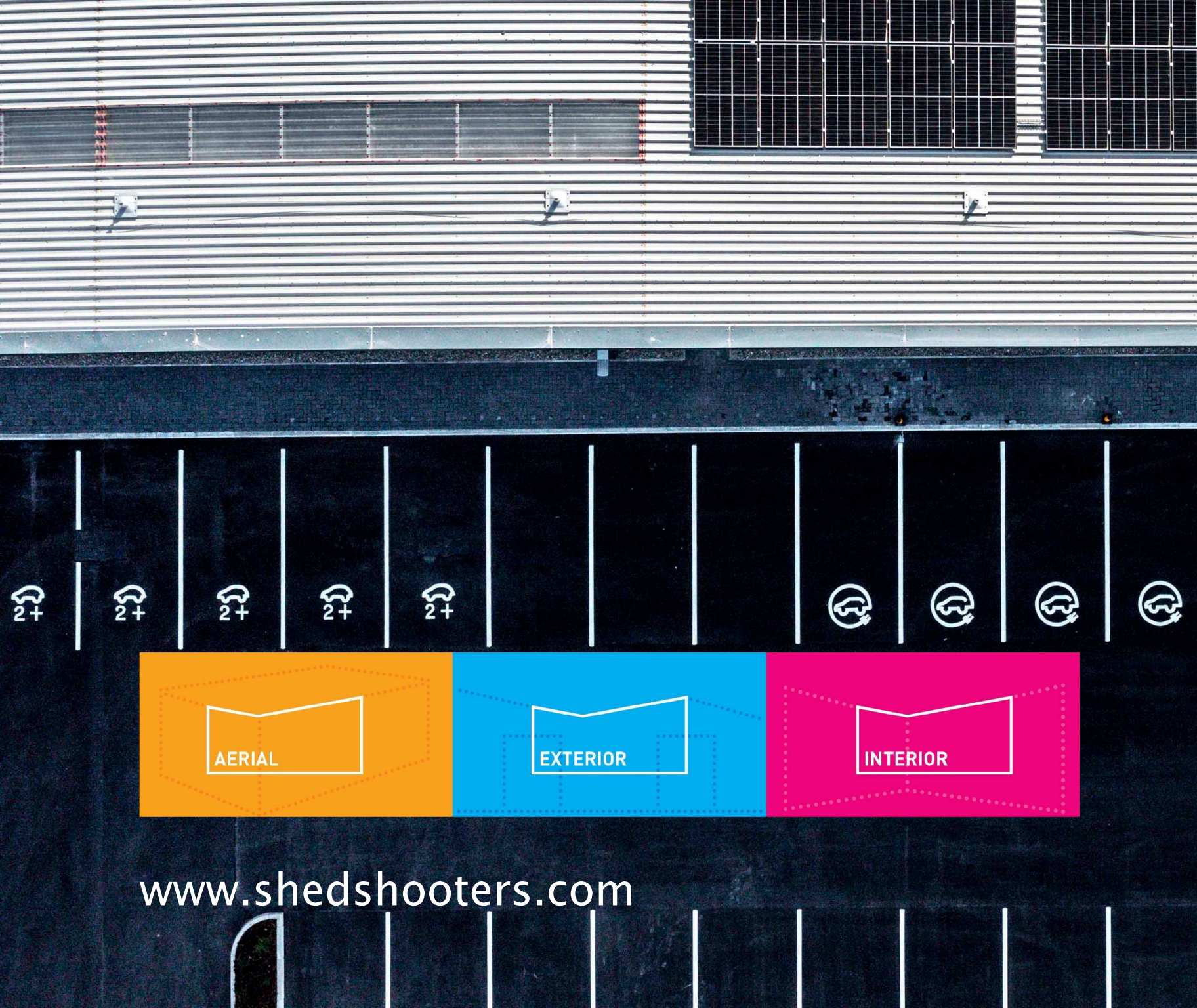
Our clients are loyal to us because of the quality of our work, and because we are so easy to work with. Wherever you are, whenever you need imagery and whatever the brief – we get the shots!

We look forward to discussing your plans for the future, and welcoming you as fans of our work!!

Ask about preferred-supplier and volume discounts!

www.shedshooters.com





AERIAL

EXTERIOR

INTERIOR

www.shedshooters.com